

Collaboration in the water cycle



Astrid Fischer – consultant drinking water source protection

25-9-2025

Content

- Introduction drinking water sector
- Issue of industrial compounds
- Mutual Gains approach permit Circle



Drinking water companies in The Netherlands

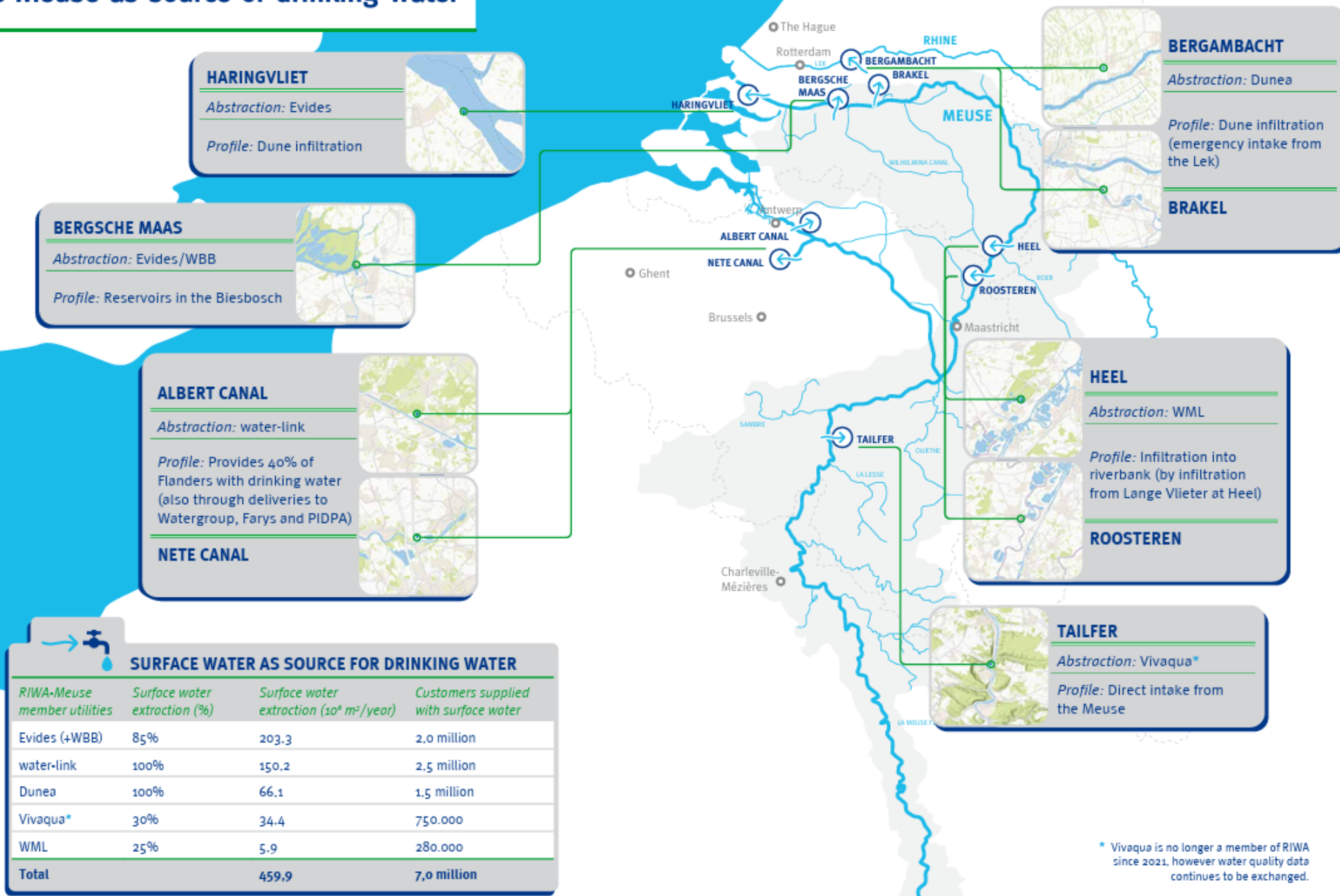


- # drinking water companies 10
- Employees (fte) 5.990
- Investments (million euro) 899
- Production (million m³) 1.150
- Network length (x 1,000 km) 122
- Connections (x 1,000) 8.691

Source: Kengetallen sector 2024, Vewin



The Meuse as source of drinking water



* Vivaqua is no longer a member of RIWA since 2021, however water quality data continues to be exchanged.

Evides Water company

Surface: 33.000 km²
Population: 8 million inhabitants

Average flow: 300 m³/s
Effluent: 20 m³/s

Drinking water source for
6 milion people

Evides delivered 152.2 million m³
of drinking water in 2024

80% surface water, **16% groundwater**
and **4% dune infiltrate**



Context; the urgency of drinking water source protection

- Pressure on the quality of drinking water sources is increasing.
- **Legal instruments for improving water quality for drinking water companies are limited.**
- Need for targeted support for water quality improvement across various forums and with diverse stakeholders.

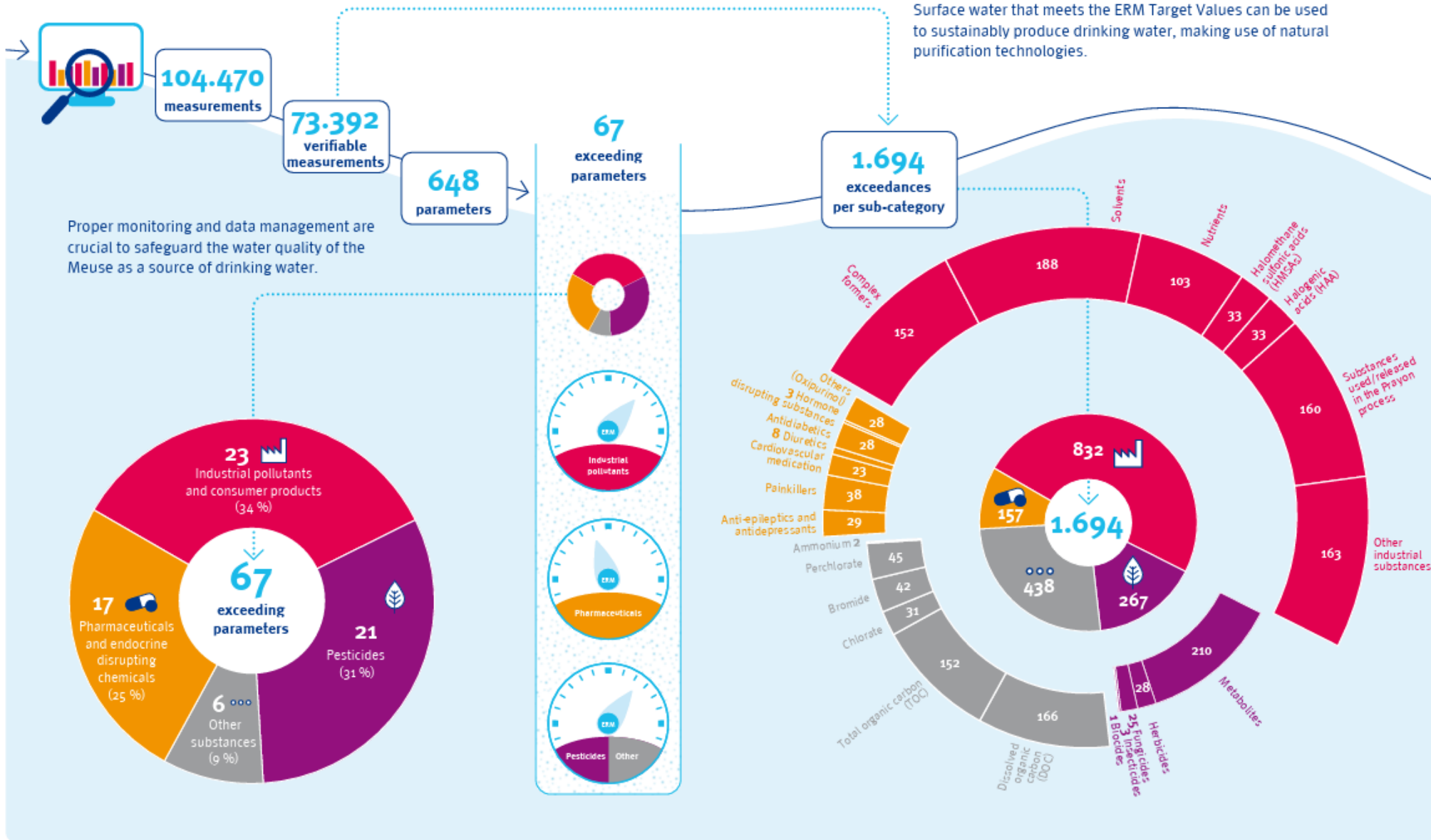


But how?

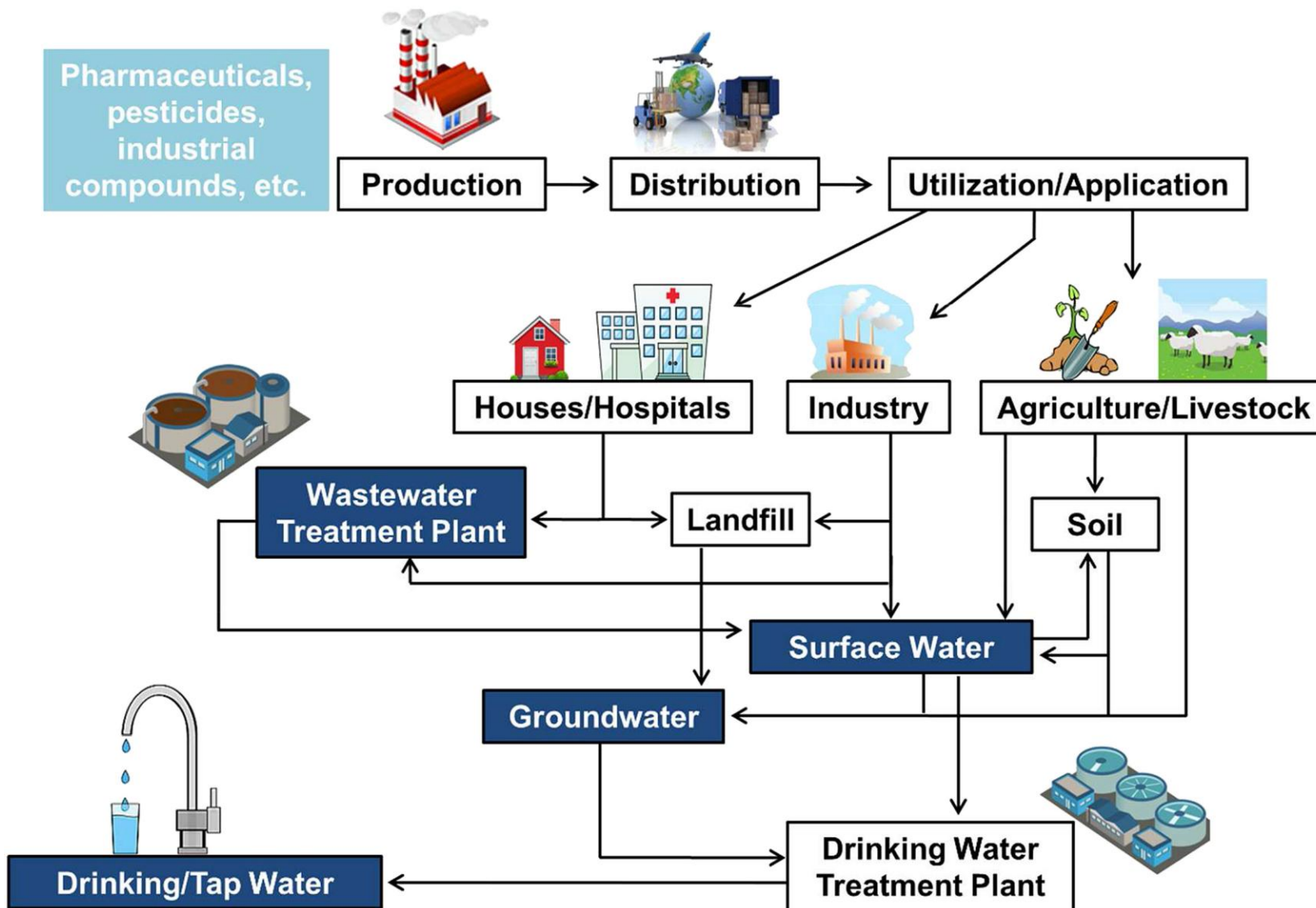


Monitoring the water quality of the Meuse

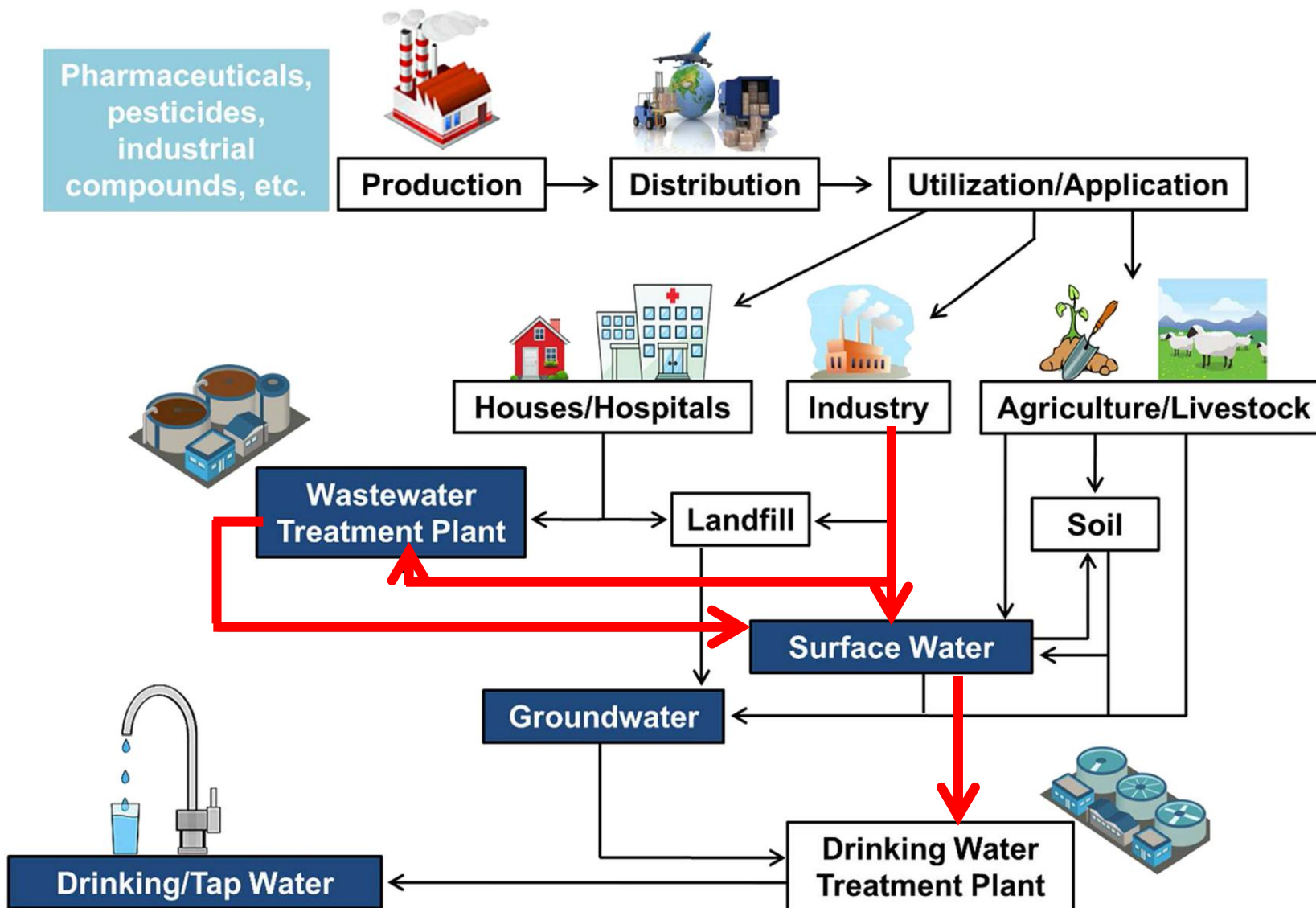
RIWA-Meuse assesses the water quality of the Meuse according to the target values of the European River Memorandum. Surface water that meets the ERM Target Values can be used to sustainably produce drinking water, making use of natural purification technologies.



Sources of micro pollution



Focus area – industrial compounds



Mutual Gains Approach Circle

2015 – Pyrazole incident

2017/18 – Renewal of discharge license Circle started; Mutual Gains Approach chosen as way to go

2019 – Application for renewal of discharge license submitted by Circle

2019/20 - Working groups on AMPA, Melamine, Quicksilver, Vanadium and other relevant compounds

15 december 2020 – Discharge permit Circle granted

2021/25 - Mutual Gains Approach meetings to support and monitor that the requirements of the permit are met at the relevant deadlines.

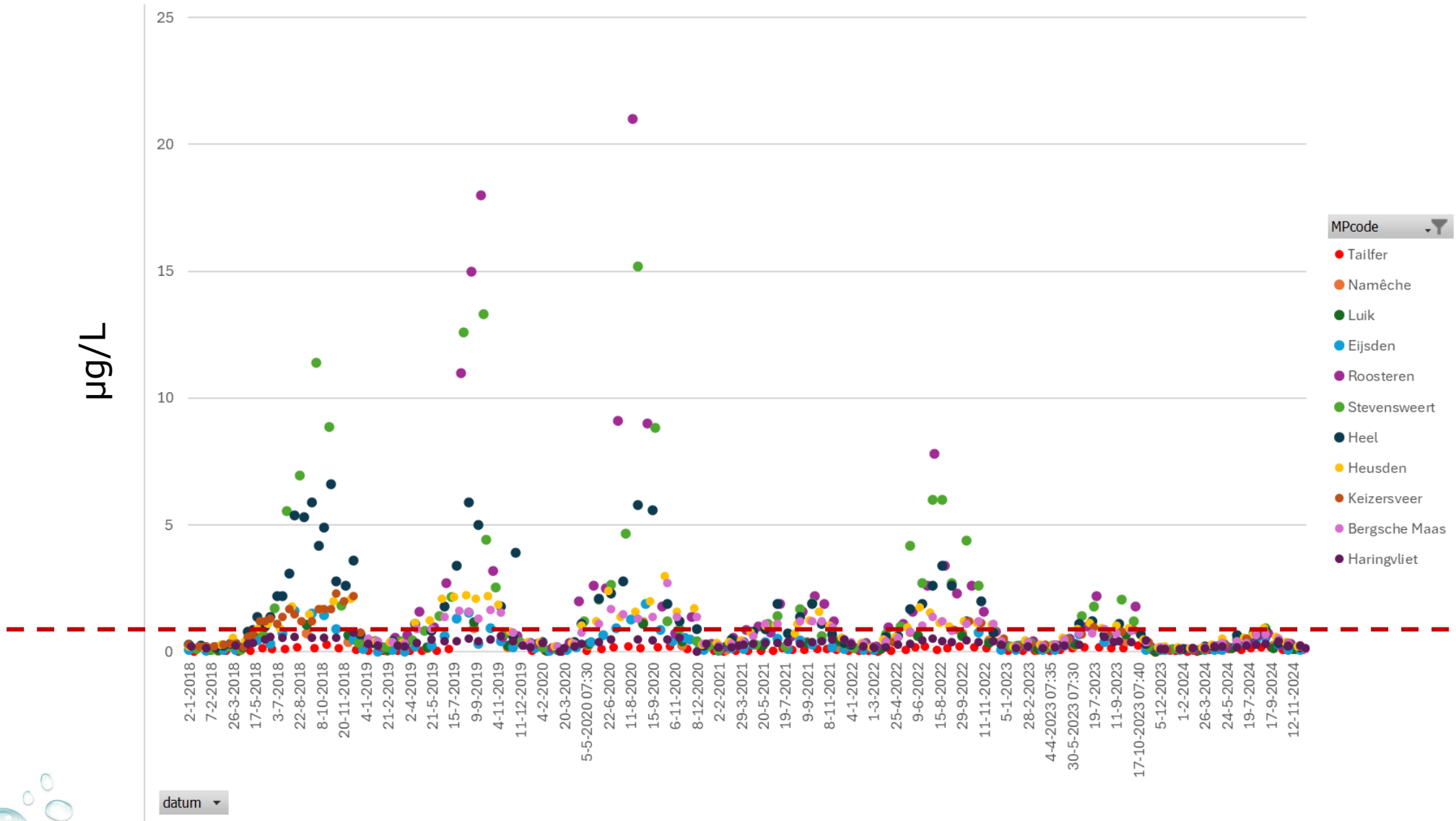
2025 – preparations for the renewal of the discharge license of Circle have begun



- Participation in the Mutual Gains Approach in relation to the discharge permit/licence of the industrial terrain of Chemelot (industrial site with 50 chemical factories).
 1. Identifying compounds most relevant to the drinking water sector such as AMPA and Melamine.
 2. Supporting the setup of a comprehensive monitoring programme including various screening methods.
 3. Promoting result obligation in the discharge licence as opposed to a best effort obligation.
 4. Participating in bimonthly meetings regarding obstacles and progress.
- = The discharge permit of Chemelot is one of the most comprehensive and advanced of the Netherlands including approximately 630 chemical compounds to be monitored and controlled.
- = Concentrations of AMPA at drinking water abstraction points no longer above the legal limits.
- = decrease of melamine in the Meuse

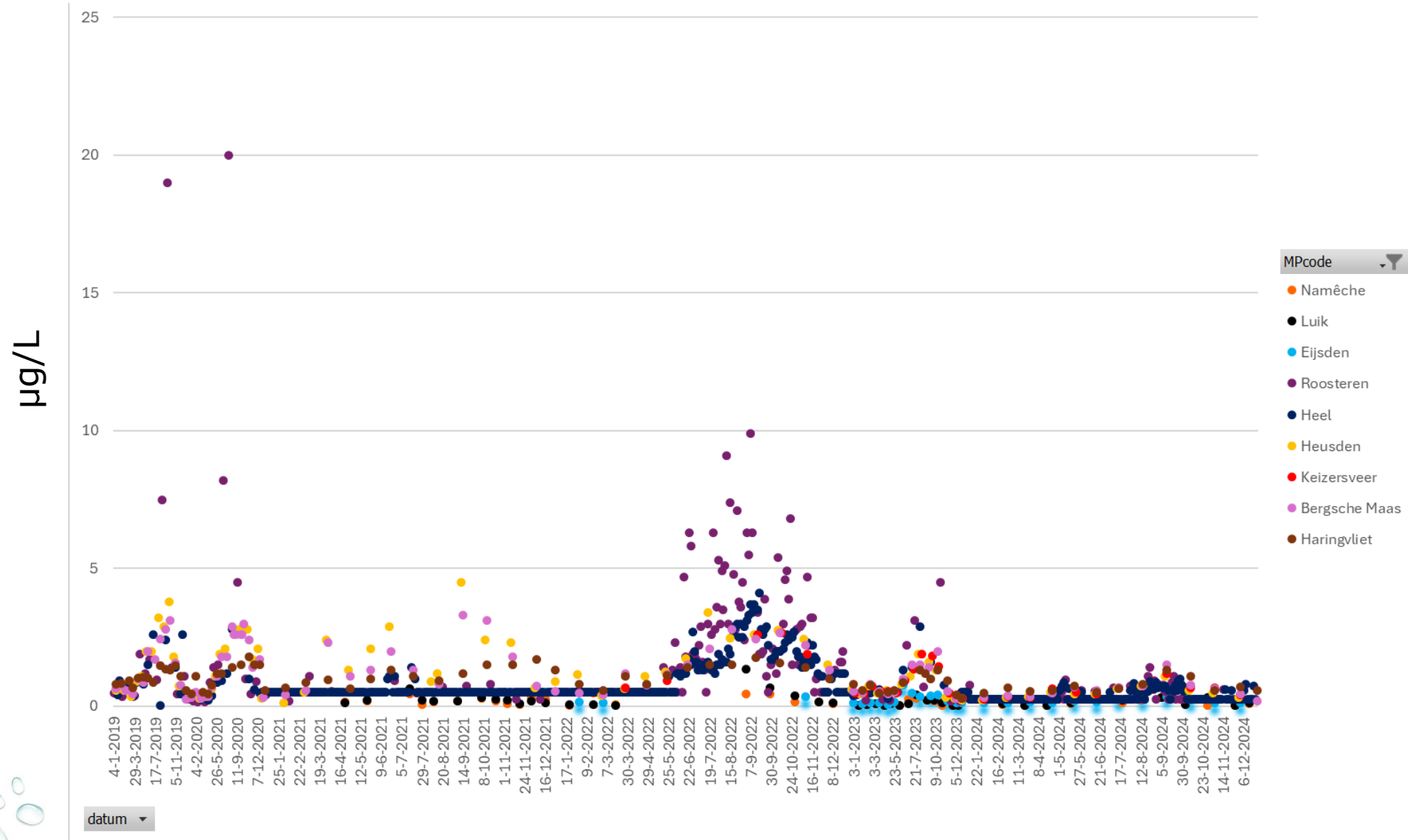


Result: Concentrations of AMPA in the Meuse 2018-2024



1 µg/L = surface water for drinking water production

Concentrations of Melamine in the Meuse 2019-2024



Questions?

